

Oscoda County 2023 Annual Report

IMPACT AT A GLANCE

- 60** PROGRAMS ATTENDED BY OSCODA COUNTY RESIDENTS
- 12** SOIL SAMPLES FROM OSCODA COUNTY PROCESSED
- 27** HEALTH & WELLNESS PROGRAM PARTICIPANTS
- 15** RESIDENTS ATTENDED FOOD SAFETY PROGRAMS
- 138** RESIDENTS SERVED BY SNAP-ED
- 11** NATURAL RESOURCES PROGRAM PARTICIPANTS
- 26** ANIMAL AGRICULTURE PROGRAM PARTICIPANTS
- 14** YOUTHS ENROLLED IN 4-H

264

TOTAL OSCODA COUNTY
RESIDENTS PARTICIPATED IN
MSU EXTENSION PROGRAMMING
IN 2023

MESSAGE FROM THE DISTRICT DIRECTOR

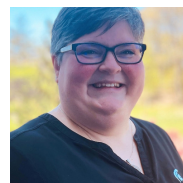
This annual report is a summary of the work that MSU Extension has done in Oscoda County to help people improve their lives through an educational process that brings the vast knowledge and resources of Michigan State University to local communities in northeast Michigan.

In the following pages, you will discover the stories of progress, resilience, and empowerment that have defined our engagement with individuals, families, and organizations across District 4. From cultivating sustainable agriculture practices to nurturing the potential of our youth through 4-H programs, each achievement is a testament to the dedication of our team and the unwavering support of our communities.

We could not do this work without local partners in community government, local volunteers and supporters, or people who turn to us for the information and education that we provide. Please continue to use us as a resource for information and ask us questions.

Thank you for your support in 2023 and beyond.

Sincerely,



Julie Darnton
District 4 Director



More than 322,000 people in Michigan visited our website last year. You may want to look here too!

PROGRAM HIGHLIGHTS

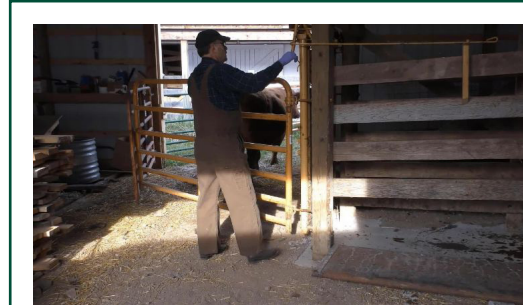
AGRICULTURE & AGRIBUSINESS

The agriculture industry is developing and growing, contributing more than \$104.7 billion annually to Michigan's economy. MSU Extension works to increase farm success through workforce development opportunities, protecting the environment, ensuring food safety, reaching new markets, and advancing agriculture through applied research. In 2023, **51** residents from Oscoda County participated in agriculture and agribusiness programs.

SUPPORTING LOCAL FARMERS

MSU Extension provides support to local farmers through farm visits, one-on-one and group meetings, and a wide variety of programs on topics including succession planning, record-keeping and farm financial analysis, nutrition and management, and more.

Calf production is an important agricultural business in Oscoda County. In 2023, **4** Oscoda County beef cow-calf producers joined 14 others from the region to discuss beef nutrition and feeding and weaning weight of calves.



Breeding soundness exams can identify bulls that will not make for a successful calf crop. **4 cattle producers from Oscoda County** took bulls to a Breeding Soundness Exam clinic where Taylor Fritz of West Branch, a third-year veterinary student at MSU was able to assist in this hands-on learning opportunity.



Since 2009, 90,000 children and adults have attended Breakfast on the Farm (BOTF) events throughout Michigan to learn where food comes from. BOTF gives consumers and farm neighbors a first-hand look at modern production, and the farm families who work hard to produce a safe, wholesome food supply for Michigan communities and the world.



12 Oscoda County residents traveled to Mecosta County to attend BOTF in 2023 at De Grins Oer Dairy in Blanchard. Besides the free farm-cooked pancake breakfast, visitors had the opportunity to visit 27 educational stations. Tours included a close-up view of cows, calves, and sheep; cow housing, nutrition and health; feed storage; crops and equipment; the milking carousel and robot; and fire rescue and MSU Extension's E-RAIL (Emergency Response for Accidents Involving Livestock) trailer.



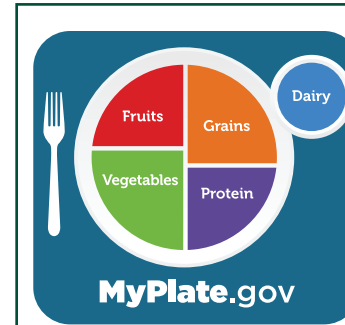
PROGRAM HIGHLIGHTS

HEALTH & NUTRITION

Through MSU Extension's nutrition and physical activity programming, Michigan adults, families, and children gain crucial knowledge about nutrition and healthy foods, increase their daily activity, and improve their food security. In 2023, **42** Oscoda County residents participated in **13** health and nutrition programs.

SUPPORTING HEALTHY COMMUNITIES

MSU Extension offers food preservation programs in-person and online. Classes cover a wide variety of topics, from water bath canning to blanching and freezing to making jam and jelly to preserving many Michigan-grown vegetables to pickling to preserving venison and much, much more. After participating in MSU Extension's food safety programs including Cottage Food Law, ServSafe, and Home Food Preservation, **15** Oscoda County residents learned how to reduce their risk of illness when preparing food and how to preserve food safely; workers and volunteers learned how to protect their customers' health and sell food products safely and legally.



MSU Extension partners with the Michigan Department of Health and Human Services to provide

Supplemental Nutrition Assistance Program Education (SNAP-Ed), a nutrition education program designed to reduce hunger and food insecurity and promote healthy eating habits. MSU Extension SNAP-Ed nutrition instructors teach youth, teens, adults and seniors how to make health a priority through instructional series such as Show Me Nutrition, Eat Healthy Be Active, Cooking for One, and Healthy Eating Adds Up. **138** Oscoda County residents participated in **4** SNAP-Ed programs in 2023.

COMMUNITY, FOOD & ENVIRONMENT

STEWARDSHIP OF NATURAL RESOURCES

Our natural resources programs improve public understanding, help landowners and communities use those assets for sustainable long-term social and economic development and conserve natural resources for future generations. In 2023, **11** Oscoda County residents participated in natural resources programs including Wild Spartans, Michigan Birding 101, nature walks, and more.

SUPPORTING STRONG COMMUNITIES

Successful and thriving communities combine knowledgeable and engaged legislators, businesses, community groups, and residents. **6** residents from Oscoda County participated in programs about leadership, planning and zoning, policy options, land use, and environmental issues.



In Michigan Birding 101, participants learn about identification of common birds, backyard feeding, birding ethics and backyard habitats/native planting, and birding sites in Michigan.



MSU is an affirmative action, equal-opportunity employer. Michigan State University Extension programs and materials are open to all without regard to race, color, national origin, gender, gender identity, religion, age, height, weight, disability, political beliefs, sexual orientation, marital status, family status or veteran status.



PROGRAM HIGHLIGHTS

CHILDREN & YOUTH

YOUTH DEVELOPMENT

Michigan 4-H is growing current and future leaders. The largest youth development organization in Michigan, 4-H provides thousands of young people with experiential learning opportunities to explore new interests and discover their passion. While learning about the world around them, youth gain valuable life skills such as responsibility, citizenship, teamwork, and problem solving. In 2023, **21** Oscoda County youth participated in youth development programs.

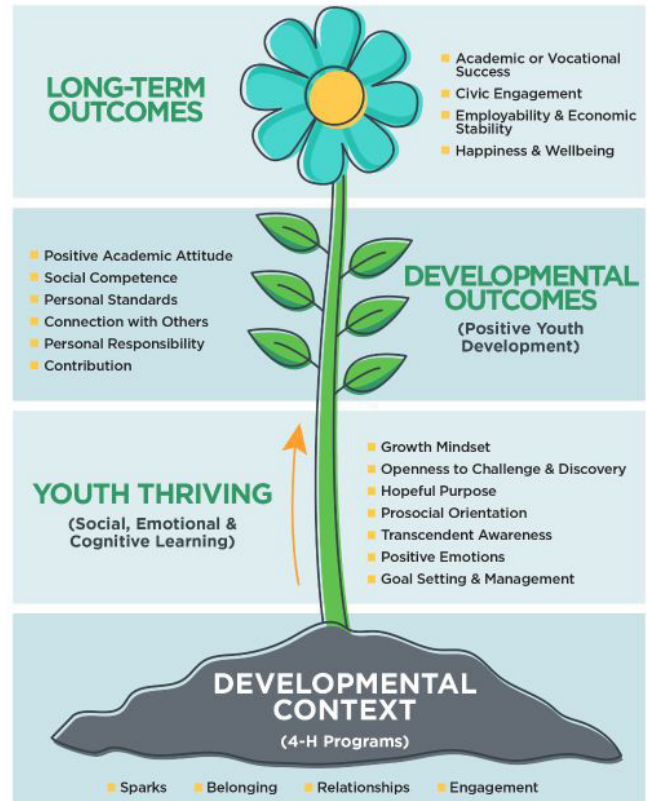


SUPPORTING STRONG FAMILIES

Parents and caregivers are the first to have influence on a child's development and future academic success. To ensure the success of families across Michigan and to support

children's school readiness, MSU Extension has invested in research- and evidence-based programming for the parents, caregivers, and early childhood professionals who have the first opportunity to enhance children's skills and become their best resources and advocates.

This programming supports families while helping parents and caregivers increase early childhood science, math and preliteracy skills, as well as enhancing social and emotional wellness of children and youth. By increasing parents' and caregivers' knowledge of child and youth development, MSU Extension is able to help caring adults build a positive foundation for learning and lifelong success. **4** Oscoda County residents participated in child and family development programs in 2023.



CONTACT US

msue.oscoda@msu.edu

canr.msu.edu/oscoda

<https://www.facebook.com/4Hoscodacounty>

Lawn & Garden Hotline

888-678-3464

Food Safety Hotline

877-643-9882



Nicole Wethington, Health & Nutrition Educator,
wethingn@msu.edu

Phil Durst, Dairy & Beef Educator,
durstp@msu.edu

Ian Sawyer, District Support,
sawyeria@msu.edu

Julie Darnton, District Director,
darntonj@msu.edu 810-922-6483